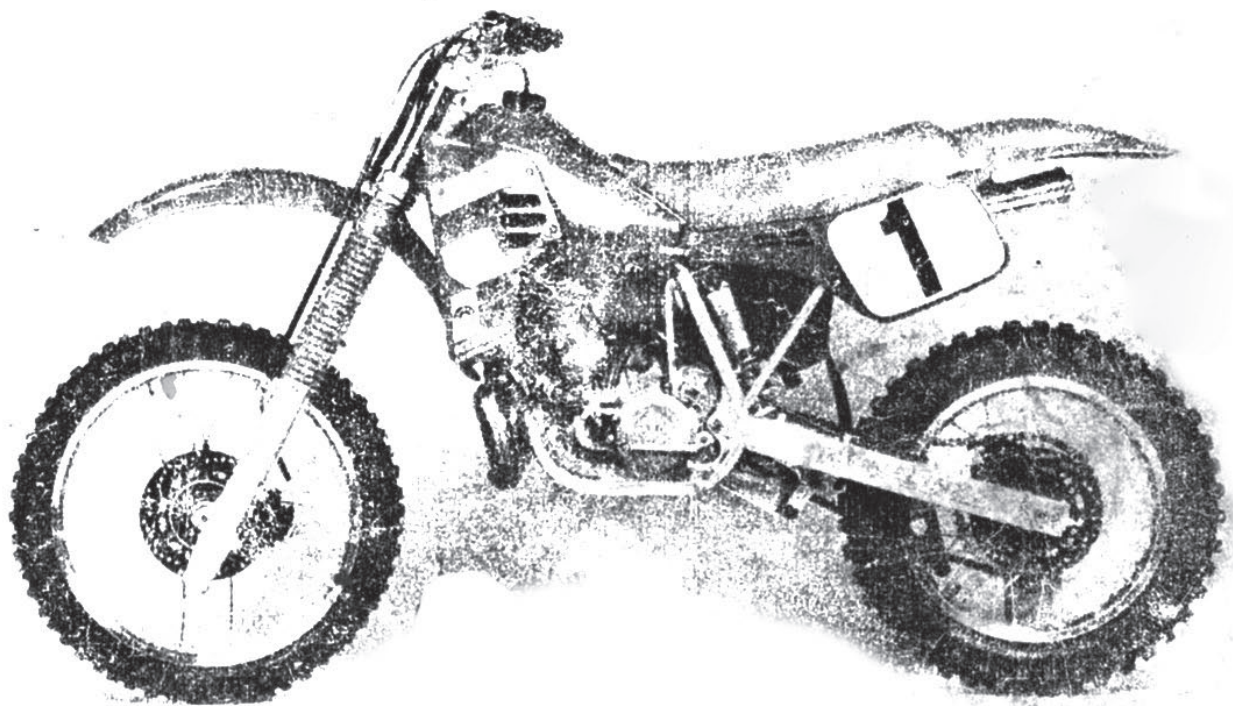


# MAICO 1986



## BETRIEBSANLEITUNG OWNERS MANUAL

GM STAR 250  
GM STAR 500  
GM STAR 250 E  
GM STAR 500 E



Gebr. Maisch  
Zweiradhandel- und Produktions GmbH  
Nagolder Straße  
7403 Ammerbuch-Pfäffingen  
Telefon: (07073) 301-0  
Telex: 7262746 maic d

# **CONTENTS**

***I Technical data***

***II Tightening torques***

***III Maintenance works - survey***

***IV Execution of maintenance works***

***V Suspension adjustments***

***VI Exploded view and part list engine***

***VII Engine Gear Box***

***VIII Exploded view and part list carburettor***

***IX Exploded view and part list chassis and frame***

***X Part list Enduro and Cross Country***

***IX Wiring Diagram***



# I. TECHNICAL DATA

## GM500 and GME500

	GM500	GME500
<b>ENGINE</b>		
Type	2-stroke liquid cooled	2-stroke liquid cooled/air cooled
System	Reed valve	
Displacement	488 cc	
Bore/Stroke	86.5/83	
Performance (kW/PS)	44.9 /61 @7000	
Max. Torque	62 @6600	
Compression ratio	12:1	
Combustion space	54 cc	
X-distance	0.5 mm	
<b>IGNITION</b>		
System	SEM/Motoplat pointless ignition	
Ignition advance	1.8 mm btde	
Spark plug	NGK B9ES (B10ES)	
Rotor	Inboard rotor	External rotor
<b>PISTON DIAMETER LIST</b>		
Standard	86.44 EDV-Nr. 6813	
1 <sup>st</sup> oversize	86.64 EDV-Nr. 6815	
2 <sup>nd</sup> oversize	86.84 EDV-Nr. 6816	
3 <sup>rd</sup> oversize	87.04 EDV-Nr. 6817	
4 <sup>th</sup> oversize	87.24 EDV-Nr. 6818	
<b>DRIVE</b>		
Clutch	5 sintered, 2 organic outer plates, 6 inner plates	
Primary reduction ratio	1.970 (65/33)	
1 <sup>st</sup> Gear	1.875 (30/16)	2.285 (32/14)
2 <sup>nd</sup> Gear	1.555 (28/18)	1.705 (29/17)
3 <sup>rd</sup> Gear	1.300 (26/20)	
4 <sup>th</sup> Gear	1.090 (24/22)	
5 <sup>th</sup> Gear	0.916 (22/24)	
Secondary reduction ratio	4.000 (52/13)	3.000 (48/16)
Chain	5/8" x 1/4" 116 links	



**I. TECHNICAL DATA (continued)****CARBURETTOR**

	<b>GM500</b>	<b>GME500</b>
Type	Bing 54/40/113	Bing 84/32/130A
Main jet	195	145
Needle jet	280-2	280
Idle air jet	60	50
Jet needle/position	6D2/M	6G1/M
Air screw opening	1	1 1/2
Venturi tube	5	14
Slide	2103	594

**OIL CAPACITY**

Gearbox	700 cc
Grade	Klüber security gear-oil synthetic 100

**FUEL CAPACITY**

Type	Super (also unleaded)
Lubrication	1:50 Klüber security motor oil 2T sport 1:100 Klüber security motor oil 2T synthetic

**WARNING**

Never mix mineral oil with synthetic oil, never fuel when the motor is running, never smoke whilst re-fuelling.

**THE IGNITION ROTOR NUT ON THE CRANKSHAFT HAS A LEFT HAND THREAD**



**I. TECHNICAL DATA (continued)****GM250 and GME250**

	<b>GM250</b>	<b>GME250</b>
<b>ENGINE</b>		
Type	2-stroke liquid cooled	
System	Reed valve	
Displacement	247 cc	
Bore/Stroke	67/70	
Performance (kW/PS)	36 /49 @8000	
Max. Torque	40 @7400	
Compression ratio	14.7:1	
Combustion space	20.5 ccm	
X-distance	0.5 mm	
<b>IGNITION</b>		
System	Motoplat pointless ignition	SEM/Motoplat pointless ignition
Ignition advance	0.4 mm btde	2.0 mm btde
Spark plug	NGK B9ES (B10ES)	
Rotor	Inboard rotor	External rotor
<b>PISTON DIAMETER LIST</b>		
Standard	66.97 EDV-No. 8370	
1 <sup>st</sup> oversize	67.37 EDV-No. 8373	
<b>DRIVE</b>		
Clutch	5 sintered, 2 organic outer plates, 6 inner plates	
Primary reduction ratio	2.567 (67/26)	
1 <sup>st</sup> Gear	1.875 (30/16)	2.285 (32/14)
2 <sup>nd</sup> Gear	1.555 (28/18)	1.705 (29/17)
3 <sup>rd</sup> Gear	1.300 (26/20)	
4 <sup>th</sup> Gear	1.090 (24/22)	
5 <sup>th</sup> Gear	0.916 (22/24)	
Secondary reduction ratio	4.000 (52/13)	3.250 (52/16)
Chain	5/8" x 1/4" 116 links	114 links
<b>CARBURETTOR</b>		
Type	Bing 54/380/121	Bing 54/380/121
Main jet	195	135
Needle jet	280-2	278-2
Idle air jet	65	65
Jet needle/position	6D2/M	6D2/M
Air screw opening	0.5 - 1	1
Slide	2103	2103

## I. TECHNICAL DATA (continued)

### OIL CAPACITY

Gearbox  
Grade

### GM250

750 cc  
Klüber security gear-oil  
synthetic 100

### GME250

Grade

### FUEL CAPACITY

Type  
Lubrication

Super (also unleaded)      Type  
1:50 Klüber security motor oil 2T sport  
1:100 Klüber security motor oil 2T synthetic

### WARNING

Never mix mineral oil with synthetic oil, never fuel when the motor is running, never smoke whilst re-fuelling.

**THE IGNITION ROTOR NUT ON THE CRANKSHAFT HAS A LEFT HAND THREAD**



## I. TECHNICAL DATA (continued)

### GM/GME 250 and 500 (all models)

#### CHASSIS

Overall length	2145 – 2175 mm
Overall width	850 mm
Overall height	1235 mm
Seat height	960 mm
Ground clearance	386 mm
Fuel tank capacity	8.7 litre (GME air cooled 10.2 litre)
Weight	98 kg (250), 102 kg (500)

#### FRAME

Construction	Rigid chrome moly single tube frame with double yoke trussing tube.
Castor angle	63°
Castor	121 mm
Wheelbase	1480 mm

#### TELESCOPIC FORK

Telescopic	Maico 42mm diameter
Spring	3.6 N/mm
Suspension travel, front	305 mm
Air support	0 - 0.4 at

#### REAR SUSPENSION

Construction	Aluminium swinging fork made from rectangular pressed, high resistant profile. Afterwards tempered.
Shock absorber	Öhlins
Length	440 mm
Travel	116 mm
Rebound and compression damping	Adjustable wheel at the end of the damper shaft / Adjustable wheel at the reservoir.
Spring load	Continuously controllable.
Suspension travel	350 mm

#### BRAKES

Front	Hydraulic disc brake 235 diameter carbon steel. Hydraulic ratio Ø 38 : Ø 11
Rear	Hydraulic disc brake 235 diameter carbon steel. Hydraulic ratio Ø 38 : Ø 16

#### TYRES

Front	3.00 x 21"
Rear	4.10 x 18" (250) 5.10 x 18" (500)

## I. TECHNICAL DATA (continued)

### FLUID CAPACITY

Telescopic fork

Brake system Front

Brake system Rear

560 cc Klüber security fork fluid 5-20 sport

About 40cc Klüber security brake fluid DOT4

About 35cc Klüber security brake fluid DOT4

In case of higher temperatures: Klüber security  
brake fluid DOT5

THE IGNITION ROTOR NUT ON THE CRANKSHAFT HAS A LEFT HAND THREAD





## II. TIGHTENING TORQUES

### SCREW AND NUT TORQUES (engine cold)

Nut for primary sprocket on crankshaft	M20 x 1	105 Nm
Nut for clutch body	M16 x 1	50 Nm
Clutch pressure screws	M6	8 Nm
Nut for ignition system	M12 x 1	70 Nm
Bolt for cylinder head	M10	25 Nm
Nut for cylinder head	M8	25 Nm
Bolt for cylinder base	M8	20 Nm
Nut for cylinder base - 500	M10	20 - 25 Nm
Nut for cylinder base - 250	M8	20 - 25 Nm
Guide screw (pin)	M14 x 1.5	30 Nm
Oil drain screw (pin)	M14 x 1.5	30 Nm
Engine housing and cover screws (not applied to right side cover)	M6	9 Nm
Cover for ignition	M6	3 Nm
Fixing screw for ignition system	M5	5 Nm
Engine mounting screws	M8	25 Nm
Screws for cylinder head support	M8	25 Nm
Front wheel axle	M16 x 1.5	30 Nm
Swing axle	M14 x 1.5	30 Nm
Rear wheel axle	M20 x 1.5	90 Nm
Hex screw for fixing of damper tube	M18 x 1	20 Nm
Hex screw for steering tube	M27 x 1	No backlash
Clamp screws for telescopic fork:		
upper crosshead	M10	45 Nm
lower crosshead	M8	20 Nm
Clamp screw for front axle	M6	9 Nm
Calliper support rear	M6	9 Nm
Pan head screw for protector clamping	M6	9 Nm
Twin Link system	M12	70 Nm
Calliper clamping	M8	25 Nm
Brake disc clamping	M6	12 Nm
Sheet metal screw for protector clamping	B5.5	1 Nm

THE IGNITION ROTOR NUT ON THE CRANKSHAFT HAS A LEFT HAND THREAD



### III. MAINTENANCE SCHEDULE

Engine	After 0.5 – 1 hours testing time	Before every race (approx. 60 miles)	Before every 3 <sup>rd</sup> race (approx. 180 miles)
Gear oil	change	Check oil level	change
Air filter	clean/oil, check fitting		
Spark plug	Check gap and condition, clean/reset/replace as necessary		
Piston			Check, examine rings for free movement
Engine mounting screws	Check, tighten if required		
Coolant	Check, top up if required		
Reeds			Check for cracks
Ignition advance			Check
Inlet manifold and airbox boot	Check for leaks		
Carburettor			Clean if necessary
Exhaust			Look for easy movement of the slide valve, check diaphragm for cracks
Chassis	After 0.5 – 1 hours testing time	Before every race (approx. 60 miles)	Before every 3 <sup>rd</sup> race (approx. 180 miles)
Steering head bearing	Check, tighten if required		
Cables		Lubricate	Lubricate, check for damage and free movement
Clutch free play	Check, adjust as necessary		
Brake pads			Check wear
Rear suspension linkage	Lubricate the three grease nipples		Dismantle, clean and grease.
Spokes	Check, tighten if required		
Silencer			Repack if required.
Tank fuel filter			Clean if necessary.
Drive chain	Check, tighten or replace as necessary.		
Sprockets			Replace as necessary.
Fork oil			Change
Fork seals			Check

## IV. EXECUTION OF MAINTENANCE WORKS

### GEAR OIL - CHECK

Pull motorbike vertical on both wheels. Unscrew the white plastic screw, situated in the clutch cover. The oil level is correct when the oil is just about coming out of the hole. N.B: Oil level has to be checked with engine hand warm. Don't tilt the motorcycle prior to checking the oil level, because a wrong result in measuring might occur.

### GEAR OIL - CHANGE

Remove oil filler screw in the clutch cover (Allen screw 10mm) and oil draining screw (right-hand screw seen in driving direction). Drain oil completely. Check the oil drain magnet for metallic particles and screw it in (do not forget the sealing ring), fill oil slowly in order to avoid overfilling, re-install oil filler screw. N.B: An oil change has to be executed with hand-warm engine.

### AIR FILTER:

Was h out in fuel, wring out or dry with compressed air, oil it. Grease head-sided sealing surface freely. IMPORTANT: The air filter must never be dry. Ensure proper fit.

### PISTON RINGS:

The pistons rings have to turn freely in the notch and may only have limited free play.

### COOLING WATER:

The cooling system is freeze protected down to  $-10^{\circ}\text{C}$ . If necessary, add anti- freeze. IMPORTANT: Every time before starting the motorbike, check the coolant level. This level always must reach slightly beyond the filler neck. If necessary refill.

### IGNITION:

Adjustment of ignition:

Use a gauge to correctly adjust the ignition advance. The gauge has to be turned into the spark plug thread by using a gauge holder at first. Then the crankshaft is turned back anti-clockwise by  $45^{\circ}$ . Upon turning the crankshaft clockwise, the adjustment mark of rotor and stator has to align with the corresponding values. In order to increase the ignition advance turn the stator against the engine's running direction. When all the screws are fixed, the ignition advance has to be measured again, as by fixing the screws it might have moved.

REMARK: Under difficult circumstances (high outer temperatures, sand, etc.) we recommend the use of NGKB 10 ES spark plugs.



## V. SUSPENSION ADJUSTMENT

### TELESCOPIC FORK:

#### The fork oil:

The viscosity of the fork oil has to be varied to suit the corresponding ambient temperature.

Therefore we recommend the following settings::

-10°C to + 10°C	+10°C to + 20°C	Over + 20°C
SAE 5W	SAE 7.5W	SAE 10W

By using the newly developed Klüber fork oil 5-20 sport, changing the oil for different temperatures is not necessary as this fluid works well over all these temperatures.

Air pressure and the oil volume should be set to meet individual body weight and travel requirements.

The oil volume can be changed by 20 mm to upper and lower reference point, the air pressure by 0.2 at (min. air pressure 0.0 atmospheres, max. air pressure 0.4 atmospheres).

#### Telescopic fork characteristics:

**normal fork:** oil quantity normal, air pressure 0 – 0.2 at.

**hard fork:** (for sand, big jumps, heavy rider, etc.) oil quantity higher, air pressure up to 0.4 at. lift up spring pretension.

**soft fork:** oil quantity lower, air pressure 0 at.



## V. SUSPENSION ADJUSTMENT (continued)

### REAR WHEEL SUSPENSION:

The right spring tension:

1. Put motorcycle upon a base with the rear wheel hanging free in the air.
2. Measure the distance between wheel axle and the seat mount bolt.
3. Take motorbike off the stand.
4. Driver has to sit on the motorbike as normal .
5. Measure distance again.

For correct spring pretension this measurement has to be about 90 to 100 mm lower than during the previous measurement. If this measurement is lower, lessen the spring pretension. If this measure higher increase the spring pretension.

### THE RIGHT REBOUND:

6. Turn the adjustment wheel by hand to the right until you come to a stop.
7. Now turn 10 clickers to the left. This is the right rebound. On different tracks the rebound can be varied between + and - 2 to 3 clickers.

### THE RIGHT COMPRESSION: (adjustment at the leading wheel of the reservoir).

8. Adjustment wheel has to be turned to the left. This is the right compression. During different tracks the pressure rebound can be varied up to + and - 4 clickers.



# VI. ENGINE PARTS

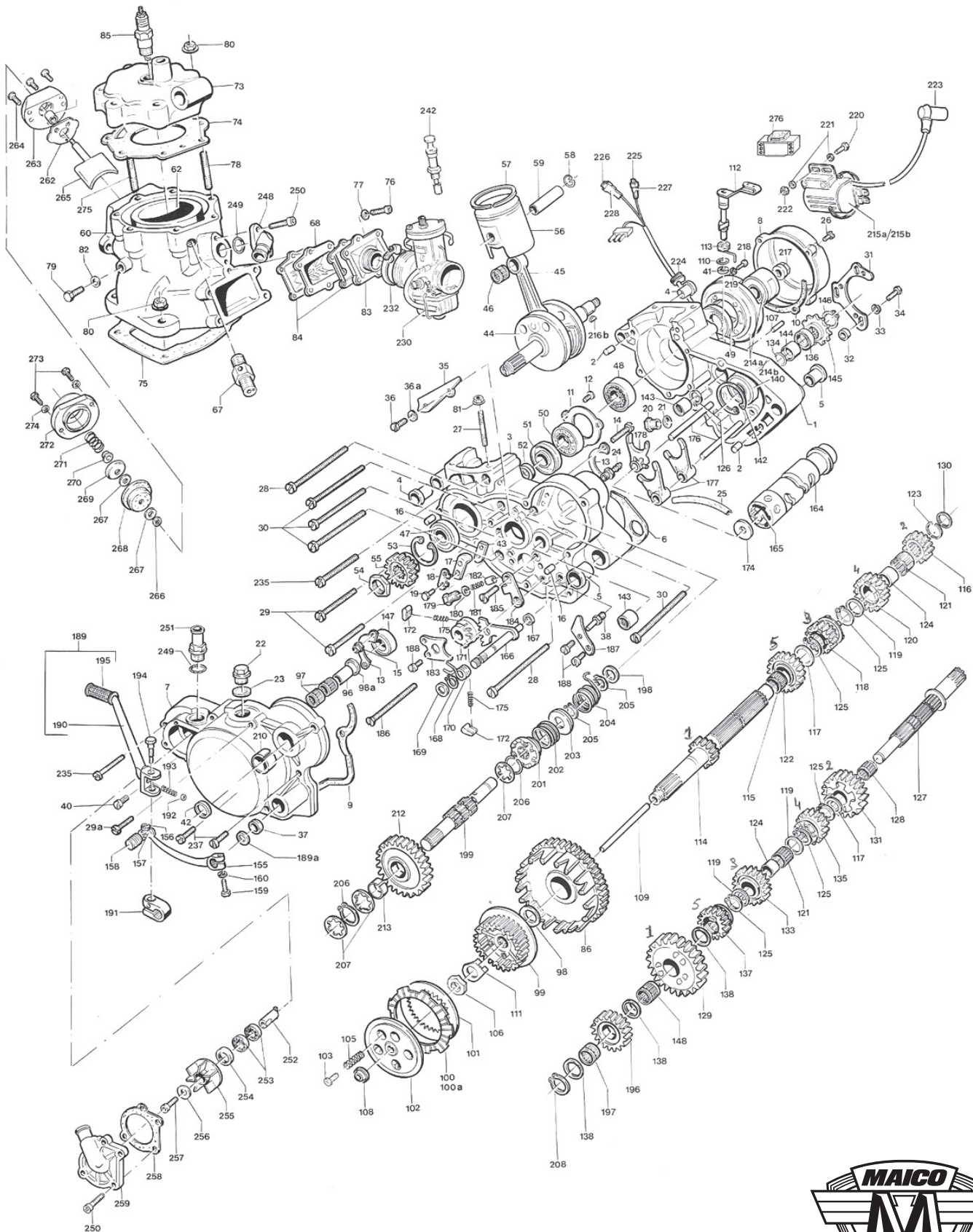


Bild Nr.	EDV-Nr.	Bezeichnung Description	Typ 367 GM 250	Typ 368 GM 500	Bild Nr.	EDV-Nr.	Bezeichnung Description	Typ 367 GM 250	Typ 368 GM 500	
1	129440	Kurbelgehäuse rechts Engine Case right	1	-	51	100547	Wellendichtring 32 x 52 x 7/9 Radialsealing ring	1	1	
	129436	Kurbelgehäuse rechts Engine Case right	-	1	52	108260	Innenring 25 x 31,45 x 17,5 Inner ring	1	-	
2	101977	Innenring Inner ring	2	2		108290	Innenring 25 x 31,45 x 13 Inner ring	-	1	
3	129443	Kurbelgehäuse links Engine case, left	1	-	53	106305	Sicherungsring 52 x 2 DIN 472 Securing ring	2	2	
	129439	Kurbelgehäuse links Engine case left	-	1	54	108571	Mutter auf KW Nut on crankshaft	1	1	
4	101995	Befestigungsbuchse Fixing bush	4	4	55	118800	Zahnrad auf KW Crankshaft sprocket	1	-	
5	101994	Schwingenachsbuchse Oscillat bush	2	2	118802	Zahnrad auf KW Crankshaft sprocket	-	1		
6	118959	Gehäusedichtung Engine case gasket	1	-	56	108370	Kolben kompl. Ø 66,97 Piston	1	-	
	119009	Gehäusedichtung Engine case gasket	-	1	108372	Kolben kompl. Ø 67,17 Piston	1	-		
7	118960	Kupplungsdeckel Clutch cover	1	-	108373	Kolben kompl. Ø 67,37 Piston	1	-		
	119008	Kupplungsdeckel Clutch cover	-	1	108374	Kolben kompl. Ø 67,57 Piston	1	-		
8	108568	Limadeckel Ignition case cover	1	1	108375	Kolben kompl. Ø 67,77 Piston	1	-		
9	118961	Deckeldichtung Clutch case gasket	1	1	108376	Kolben kompl. Ø 67,97 Piston	1	-		
10	101989	Deckeldichtung rechts Ignition case gasket, right	1	1	106813	Kolben kompl. Ø 86,44 Piston	-	1		
11	101988	Lagerhalteblech KW Bearing cover plate	1	1	106815	Kolben kompl. Ø 86,64 Piston	-	1		
12	101795	Senkschraube M 5 x 8 DIN 965 Countersunk screw	3	3	106816	Kolben kompl. Ø 86,84 Piston	-	1		
13	108008	Lagerhalteblech HW Bearing cover plate	2	2	106817	Kolben kompl. Ø 87,04 Piston	-	1		
14	101536	Zylinderschraube M 6 x 25 DIN 84 Cylinder screw	2	2	106818	Kolben kompl. Ø 87,24 Piston	-	1		
15	101690	Sicherungsmutter M 6 DIN 980 Securing nut	2	2	106819	Kolben kompl. Ø 87,44 Piston	-	1		
16	101997	Innenring Inner ring	2	2	57	100523	Kolbenring Ø 67,00 Piston ring	1	-	
17	108009	Anlaufblech für Sperrzahnkörper Washer	1	1	106184	Kolbenring Ø 67,20 Piston ring	1	-		
18	108010	Sicherungsblech Flat washer	1	1	106187	Kolbenring Ø 67,40 Piston ring	1	-		
19	101569	Sechskantschraube M 6 x 20 DIN 933 Hexagon screw	2	2	102067	Kolbenring Ø 67,60 Piston ring	1	-		
20	100895	Magnetverschlussschraube Magneto screw cap	1	1	106189	Kolbenring Ø 67,80 Piston ring	1	-		
21	100410	Dichtring A 14 x 18 DIN 933 Seal ring	2	2	106191	Kolbenring Ø 68,00 Piston ring	1	-		
22	100408	Verschlussschraube M 20 x 1,5 DIN 910 Screw cap	1	1	106814	Kolbenring Ø 86,50 Piston ring	-	1		
23	100409	Flachdichtring A 20 x 24 DIN 7603 Seal ring	1	1	106820	Kolbenring Ø 86,70 Piston ring	-	1		
24	101985	Einschraubstutzen Breather	1	1	106821	Kolbenring Ø 86,90 Piston ring	-	1		
25	100263	Entlüftungsschlauch Breather tube	x	x	106822	Kolbenring Ø 87,20 Piston ring	-	1		
26	101536	Zylinderschraube M 6 x 25 DIN 84 Cylinder screw	4	4	106823	Kolbenring Ø 87,30 Piston ring	-	1		
27	101772	Stiftschraube M 8 x 25 DIN 835 Stud	4	-	106824	Kolbenring Ø 87,50 Piston ring	-	1		
	101780	Stiftschraube M 10 x 30 DIN 835 Stud	-	4	58	100536	Springring Circlip	2	2	
28	101545	Zylinderschraube AM 6 x 80 DIN 84 Cylinder screw	2	3	59	108371	Kolbenbolzen 18 x 13 x 50 Wrist pin	1	-	
29	101541	Zylinderschraube AM 6 x 50 DIN 84 Cylinder screw	5	4	100535	Kolbenbolzen Wrist pin	-	1		
29a	101539	Zylinderschraube AM 6 x 40 DIN 84 Cylinder screw	1	1	-60	129485	Zylinder vollst. Cylinder complete	1	-	
30	101519	Zylinderschraube AM 6 x 75 DIN 84 Cylinder screw	4	4		129518	Zylinder vollst. Cylinder complete	-	1	
31	108011	Schutzbügel Bracket	1	1		129487	Zylinder vollst. im Austausch Cylinder complete in exchange	1	-	
32	108012	Distanzhülse Spacer bush	3	3		129521	Zylinder vollst. im Austausch Cylinder complete in exchange	-	1	
33	101510	Federring B 6 DIN 128 Spring ring	3	3	62	129520	Zylinderbuchse Cylinder bush	-	1	
34	101571	Sechskantschraube M 6 x 30 DIN 931 Hexagon screw	3	3		67	108298	Dekoventil komplett Decompression valve complete	-	1
35	108025	Ölleitblech Oil guide plate	1	-		68	106796	Membrane vollst. Reed valve complete	1	1
	108031	Ölleitblech Oil guide plate	-	1		69	106797	Membrankörper Reed valve	1	1
36	101529	Zylinderschraube AM 5 x 10 DIN 84 Cylinder screw	2	2		70	106798	Membranzunge Reed valve tongue	2	2
36a	101711	Federscheibe B 5 DIN 137 Spring washer	2	2		71	106799	Ansschlagzunge Reed valve stopf tongue	2	2
37	101865	Wellendichtring AS 12 x 22 x 7 Seal ring	1	1		72	101877	Linsenschraube M 3 x 8 Z 4 DIN 7985 Oval head screw	6	6
38	108014	Federstift-Rückholfeder Spring pin return spring	1	1		73	118968	Zylinderkopf Cylinder head	1	-
40	129504	Zylinderschraube M 6 x 10 DIN 84 Cylinder screw	1	1		119023	Zylinderkopf Cylinder head	-	1	
41	108175	Dichtring Seal ring	1	1		74	108575	Zylinderkopfdichtung Cylinder head gasket	1	-
42	101866	Wellendichtring Sealing ring	1	1		119024	Zylinderkopfdichtung Cylinder head gasket	-	1	
43	108016	Anschlagblech Stop plate	1	1		75	108222	Zylinderfußdichtung 0,3 mm dick Cylinder base gasket	nB	-
44	108569	Kurbelwelle vollst. Crankshaft complete	1	-		108223	Zylinderfußdichtung 0,5 mm dick Cylinder base gasket	nB	-	
	119015	Kurbelwelle vollst. Crankshaft complete	-	1		108224	Zylinderfußdichtung 0,7 mm dick Cylinder base gasket	nB	-	
104089		Kurbelwelle im Austausch Crankshaft in exchange	1	-		107462	Zylinderfußdichtung 0,3 mm dick Cylinder base gasket	-	nB	
119038		Kurbelwelle im Austausch Crankshaft in exchange	-	1		107463	Zylinderfußdichtung 0,5 mm dick Cylinder base gasket	-	nB	
45	104086	Pleuelreparatursatz Connecting rod repair kit	1	-		107464	Zylinderfußdichtung 0,7 mm dick Cylinder base gasket	-	nB	
	104088	Pleuelreparatursatz Connecting rod repair kit	-	1		76	101635	Innensechskantschraube M 6 x 25 Inner hexagon screw	6	6
46	108664	Nadellager 0-2 Needle bearing	nB	nB		77	101510	Federring B 6 DIN 128 Spring ring	6	6
	108665	Nadellager 2-4 Needle bearing	nB	nB		78	108576	Stiftschraube Stud	6	7
	108666	Nadellager 4-6 Needle bearing	nB	nB		79	101564	Sechskantschraube M 6 x 10 Hexagon screw	1	1
47	103795	Zylinderrollenlager NU 205 C 3 Cylinder roller bearing	1	1		80	118804	Flanschnutter M 8 Flange nut	11	7
48	100426	Zylinderrollenlager NU 305 C 3 Cylinder roller bearing	1	1		81	118859	Flanschnutter M 10 Flange nut	-	4
49	103469	Wellendichtring 25 x 52 x 9 Radial sealing ring	1	1		82	100407	Flachdichtring A 6 x 10 Seal ring	1	1
50	100425	Rillenkugellager 6305 C 3 DIN 625 Ball bearing	1	1		83	118964	Ansaugstutzen Intake flange	1	1

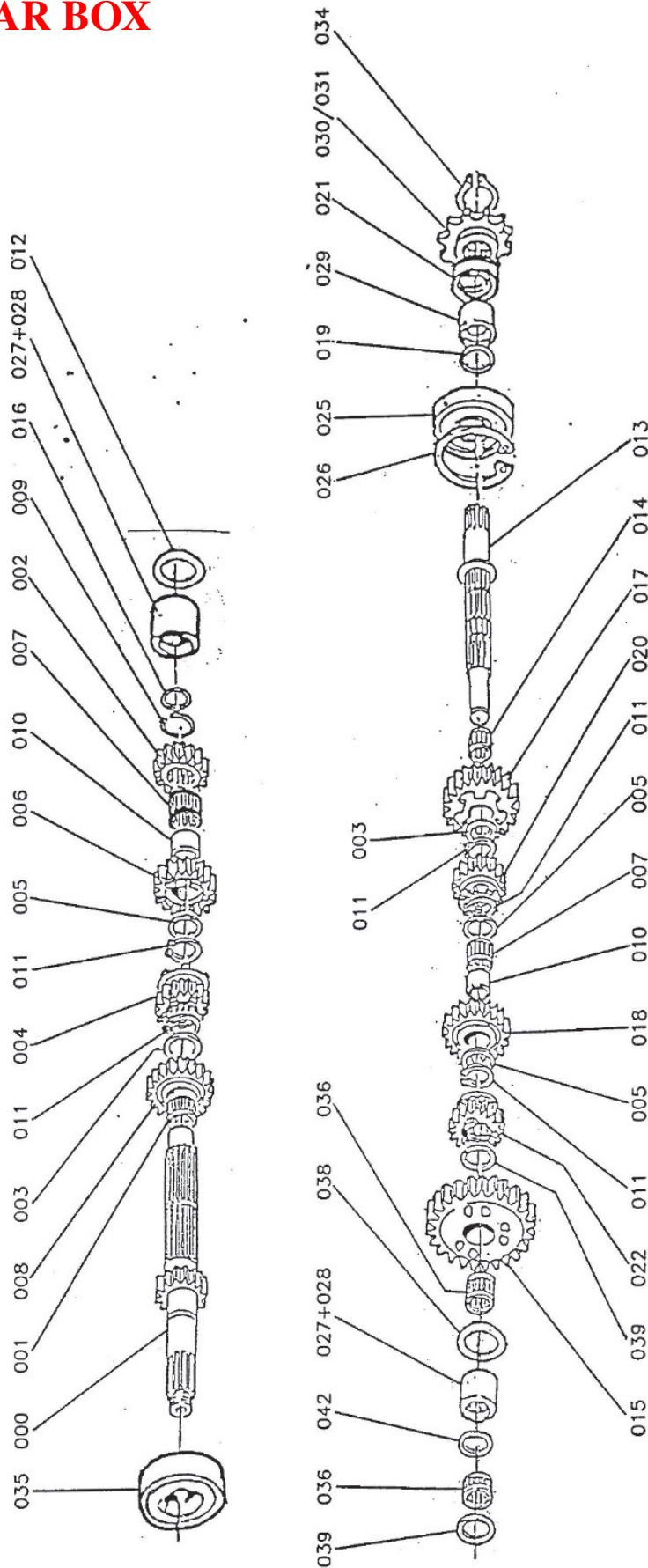




Bild Nr.	EDV-Nr.	Bezeichnung Description	Typ 367 GM 250	Typ 368 GM 500
220	101567	Sechskantschraube M 6 x 16 DIN 933 Hexagon screw	2	2
221	101732	Scheibe B 6,4 DIN 125 Washer	4	4
222	101690	Sicherungsmutter NM 6 DIN 980 Securing nut	2	2
223	108689	Kerzenstecker NGK Spark plug socket	1	1
224	103530	Kabeldurchführung Cable sleeve	1	1
225	103576	Steckhülse 6,3 - 1 Connector	1	1
226	103595	Steckhülse 9,5 - 6 Connector	1	1
227	103596	Isolierhülse schmal Connector housing thin	1	1
228	103597	Isolierhülse breit Connector housing wide	1	1
229	100589	Zündkabel Ignition cable	x	x
230	118984	Vergaser kompl. BING 54/38/121 Carburetor complete	1	-
	119030	Vergaser kompl. BING 54/40/113 Carburetor complete	-	1
232	100603	Schlauchklemme Clamp	1	1
234	100449	Tellerfeder Cupspring	1	1
235	101542	Zylinderschraube AM 6 x 55 DIN 84 Cylinder screw	1	1
237	101550	Zylinderschraube AM 6 x 30 DIN Cylinder screw	3	3
242	119138	Starteinrichtung komplett Starter complete	1	1
248	108600	Winkelstutzen Link stud	1	1
249	108601	O - Ring 17 x 2 O - ring seal	2	2
250	101633	Innensechskantschraube M 6 x 20 DIN 912 Inner hexagon screw	6	6
251	108599	Anschlußstutzen Intake flange	1	1
252	108669	Pumpenradwelle Water pump shaft	1	1
253	108615	Rillenkugellager 12 x 21 x 5 Ball bearing	2	2
254	101865	Wellendichtring AS 12 x 22 x 7 Sealing ring	1	1
255	108596	Wasserpumpenrad Sprocket for water pump	1	1
256	101741	Scheibe A 5,3 DIN 9021 Washer	1	1
257	108605	Innensechskantschraube M 5 x 10 DIN 912 Inner hexagon screw	1	1
258	108597	Pumpendeckeldichtung Gasket for water pump	1	1
259	108598	Wasserpumpendeckel Water pump cover	1	1
260	101421	Paßscheibe 18 x 12 x 1 Washer	1	-
261	129546	Führungsbuchse Guiding bush	1	-
262	129496	Dichtung für ALS Gasket for ALS	1	-
263	129494	Zwischenstück für ALS Adapter for ALS	1	-
264	118888	Innensechskantschraube M 6 x 16 Inner Hexagon Screw	3	-
265	129497	Schieber geschw. Slide welded	1	-
266	101747	Scheibe B,4 x 1,5 x 1,5 DIN 433 Washer	1	-
267	129493	Isolierscheibe Isolating screw	2	-
268	129489	Rollmembrane Roll membrane	1	-
269	129491	Federteller Spring pocket	1	-
270	129492	Flanschmutter M 6 Flange nut	1	-
271	129490	Druckfeder Tension spring	1	-
272	129488	Membrandeckel Membrane cover	1	-
273	101565	Sechskantschraube M 6 x 12 Hexagon screw	2	-
274	101712	Federscheibe Spring disc	2	-
275	129552	Stiftschraube Stud	1	-
276	119130	Modul Motoplat Modul Motoplat	-	1
-	119177	Kleiner Dichtungssatz GM 250 Small gasket set	1	-
-	119179	Kleiner Dichtungssatz GM 500 Small gasket set	-	1
-	119178	Großer Dichtungssatz GM 250 Main gasket set	1	-
-	119180	Großer Dichtungssatz GM 500 Main gasket set	-	1
-	129563	Dichtungssatz Auslasssystem GM Star 250 Gasket set exhaust system	1	-

# VII. ENGINE GEAR BOX

Engine \*Gear box\*



Partnumber A01.62.



# VIII. CARBURETTOR PARTS

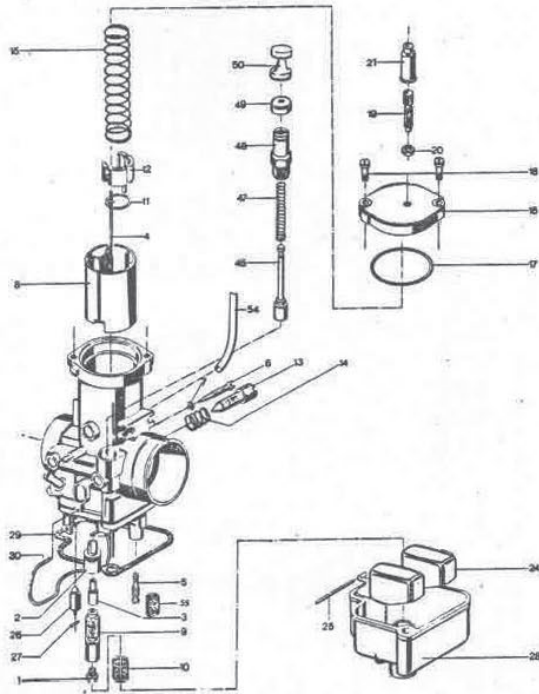
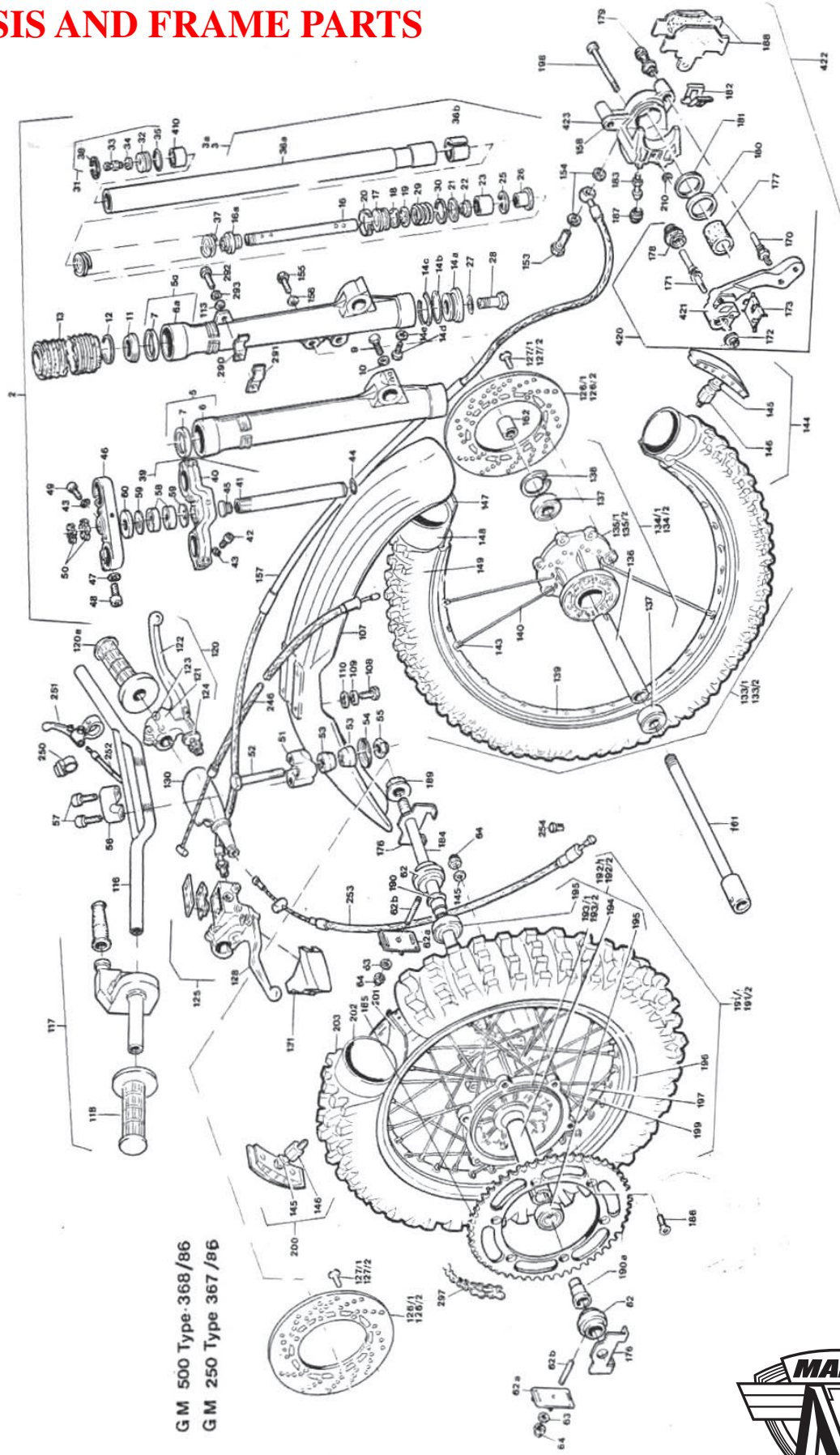


Bild Nr.	EOV-Nr.	Bezeichnung Description	Typ 367 GM 250	Typ 368 GM 500
-	118984	Vergaser kompl. BING 54/36/121 Carburetor cpl.	1	-
-	119030	Vergaser kompl. BING 54/40/113 Carburetor cpl.	-	1
1	100624	Hauptdüse (gewünschte Größe angeben) Main jet	1	1
2	108326	Zerstäuber Nr. 5 Vaporizer	1	1
3	105302	Nadeldüse (gewünschte Größe angeben) Needle jet	1	1
4	106351	Düsenadel #602* Needle	1	1
5	100626	Leerlaufdüse (gewünschte Größe angeben) Pilot jet	1	1
6	105325	Luftregulierungsschraube m. Dichting Air adjusting screw	1	1
7	105326	Dichting Sealing ring	1	1
8	105327	Gasschieber #2103* Slide	1	1
9	106907	Düsenstock Jet body	1	-
	106358	Düsenstock Jet body	-	1
10	105325	Siebölse Filter screen	1	1
11	100643	Halteplättchen Needle clip	1	1
12	105330	Führungstüch Spring guide	1	1
13	100631	Stellschraube f. Gasschieber Slide adjusting screw	1	1
14	100632	Feder für Stellschraube Spring for adjusting screw	1	1
15	105331	Feder für Gasschieber Spring for slide	1	1
16	105332	Deckelplatte Cover plate	1	1
17	100650	Dichting für Deckelplatte Gasket for cover plate	1	1
18	100647	Befestigungsschraube Screw	2	2
19	100648	Stellschraube Adjusting screw	1	1
20	100649	Mutter für Stellschraube Nut	1	1
21	100651	Gummitülle Rubber sheet	1	1
24	100638	Schwimmer Float	1	1
25	100640	Stift für Schwimmer Float pin	1	1
26	105333	Schwimmeradel Float needle	1	1
27	103331	Federbügel für Schwimmeradel Clip	1	1
28	106915	Schwimmerkappe Float bowl	1	1
29	100636	Dichtung Gasket	1	1
30	100637	Federbügel Clip	1	1
46	119135	Startkühler Choke piston	1	1
47	119136	Feder Spring	1	1
48	119137	Startgehäuse Choke housing	1	1
49	119138	Gummkappe Rubber cap	1	1
50	119139	Zugknopf Pull button	1	1
54	105338	Schlauch Hose	x	x
55	105343	Siebölse für Leerlaufdüse Filter screen for pilot jet	1	1



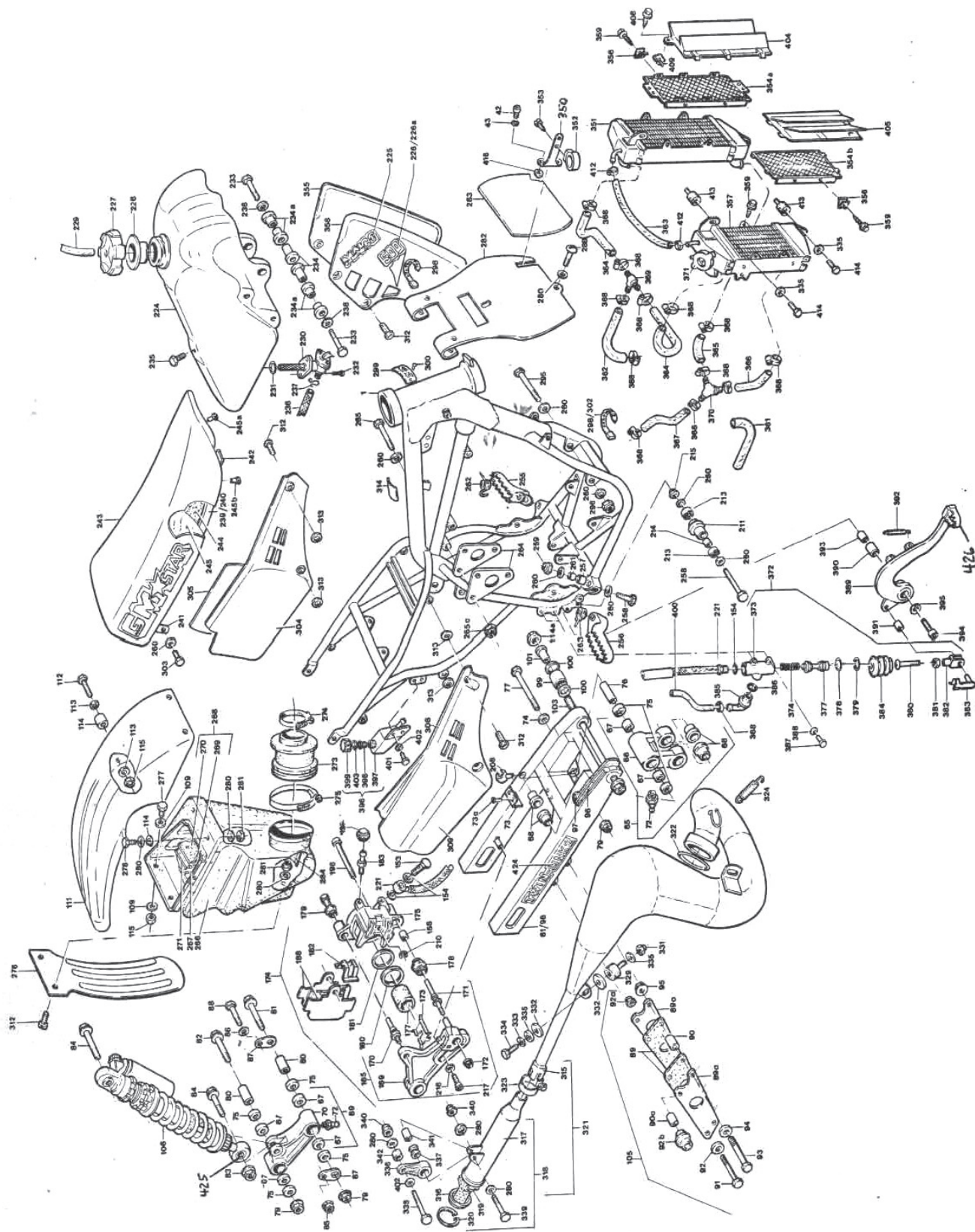
# IX. CHASSIS AND FRAME PARTS



GM 500 Type-368/86  
GM 250 Type 367/86



# IX. CHASSIS AND FRAME PARTS (continued)







## IX. CHASSIS AND FRAME PARTS (continued)

Bild Nr.	EDV-Nr.	Bezeichnung Description	Typ 367 GM 250	Typ 368 GM 500	Bild Nr.	EDV-Nr.	Bezeichnung Description	Typ 367 GM 250	Typ 368 GM 500
245	118928	Bezug Seat cover	1	1	308	118941	Startnummernschild rechts Side panel right	1	1
	119078	Bezug (Hohe Form) Seat cover (high type)	n.B.	n.B.	309	118943	Abziehfolie rechts grün Decal right green	1	-
245a	107940	Blindniet d 4,8 x 10,5 Blind rivet	9	2		118994	Abziehfolie rechts gelb Decal right yellow	-	1
245b	118930	Blindniet d 4 x 9,5 Blind rivet	2	2		119434	Abziehfolie rechts weiß Decal right white	n.B.	n.B.
246	107954	Gaszug kompl. Gas throttle compl.	1	1	312	118944	Linseenschraube M6 x 14 DIN 9130 Screw	8	8
250	102220	Auslöschknopf Button	-	1	313	102708	Gummischeibe Rubber washer	4	4
251	107869	Dekompressionshebel, vollst. Decompressor, cpl.	-	1	314	118920	Tankauflegegummi Rubber for tank	2	2
251a	107890	Schraubnippel Nipple	1	1	315	118953	Auspuff geschweißt Exhaust welded	1	-
252	100315	Deekompressor kabel Decompressor cable	-	1	129515	Auspuff geschweißt Exhaust welded	-	1	
253	107950	Kupplungszug kompl. Clutch cable	1	1	316	108357	Endrohr gelötet Tail pipe soldered	1	-
254	107951	Nippelaufnahme Nipple holder	1	1	108380	Endrohr gelötet Tail pipe soldered	-	1	
255	129226	Fußraute links Foot rest left	1	1	317	118948	Schalldämpfer geschweißt Silencer welded	1	-
256	129227	Fußraute rechts Foot rest right	1	1	118996	Schalldämpfer geschweißt Silencer welded	-	1	
257	106738	Lagerbuchse Bearing bush	2	2	318	118951	Schalldämpfer vollst. Silencer cpl.	1	-
258	101608	Sechskantschraube M8 x 60 DIN 931 Hexagon screw	3	3	118997	Schalldämpfer vollst. Silencer cpl.	-	1	
259	101692	Sicherungsmutter M8 DIN 980 Securing nut	6	6	319	106864	Füllmaterial Exhaust packing	1	-
260	101734	Scheibe B 8,4 DIN 125 Washer	16	16	106851	Füllmaterial Exhaust packing	-	1	
261	106750	Distanzbuchse Spacer bush	2	2	320	108368	Sicherungsring Circlip	1	1
262	118934	Fußrastenfeder links Foot rest spring left	1	1	321	118952	Auspuffanlage vollst. Exhaust system cpl.	1	-
263	118935	Fußrastenfeder rechts Foot rest spring right	1	1	129515	Auspuffanlage vollst. Exhaust system cpl.	-	1	
264	107935	Stützblech für Zylinderkopf Supporting plate for cylinder head	2	2	322	118954	O-Ring 48 x 4 O-ring	1	1
265	101597	Sechskantschraube M8 x 55 DIN 931 Hexagon screw	3	3	323	105474	Spannschelle Clamp	1	1
265a	108804	Flanschmutter M 8 Flange nut	3	3	324	106866	Zugfeder Tension spring	2	-
266	118946	Luftfilterkasten Air filter box	1	1	329	101166	Schwinggabelpuffer Silent bloc for exhaust	2	2
267	107966	Halteswinkel Clamp	1	1	330	101732	Scheibe B 6,4 DIN 125 Washer	2	2
268	107434	Filterpatrone kompl. Filter element cpl.	1	1	331	101690	Sicherungsmutter M6 DIN 980 Securing nut	2	2
269	107435	Filterkorb Filter cage	1	1	332	105430	Scheibe Washer	4	4
270	107436	Filtereinsatz Air filter foam	1	1	333	101510	Federling B 6 DIN 128 Spring ring	2	2
271	107437	Federbügel vollst. Holding wire cpl.	1	1	334	101525	Sechskantschraube M6 x 14 DIN 933 Hexagon screw	2	2
273	110937	Ansaugverbindung Intake flange	1	1	335	101750	Scheibe D 6,4 DIN 9021 Washer	10	10
274	100683	Schlauchklemme Clamp	1	1	336	108780	Schalldämpferhalter Hush for silencer	1	1
275	107451	Schlauchklemme Clamp	1	1	337	108781	Gummiblock Rubber bloc	1	1
276	107980	Spritzschutz Splash guard	1	1	338	101580	Sechskantschraube M6 x 45 DIN 933 Hexagon screw	1	1
277	107916	Sechskantschraube M6 x 30 DIN 933 Hexagon screw	2	2	339	101571	Sechskantschraube M6 x 30 DIN 931 Hexagon screw	1	1
278	101570	Sechskantschraube M6 x 25 DIN 933 Hexagon screw	2	2	340	101690	Sicherungsmutter M6 DIN 980 Securing nut	7	7
279	118944	Linseenschraube M6 x 14 DIN 9130 Screw	2	2	341	108782	Distanzbuchse Spacer bush	1	1
280	101750	Scheibe B 6,4 DIN 9021 Washer	10	10	342	118947	Distanzblech (Ap) Spacer bush	1	1
281	101690	Sicherungsmutter M6 DIN 980 Securing nut	6	6	350	125232	Führungsbügel Holder	1	1
282	107444	Startnummernplatte vorn Front number plate	1	1	351	129330	Kühler links Radiator left	1	1
283	107975	Abziehfolie vorn grün Front decal green	1	-	352	129333	Führungsschelle Clamp	1	1
	109435	Abziehfolie vorn weiß Front decal white	n.B.	n.B.	353	103738	Linseenschraube B 4,8 x 13 DIN 7981 Screw	2	2
	107983	Abziehfolie vorn gelb Front decal yellow	-	1	354a	129321	Schutzgitter links lang Protector left long	1	1
284	107433	Abdeckplatte Cover plate	1	1	354b	129324	Schutzgitter rechts kurz Protector right short	1	1
288	103711	Kunststoffschraube M6 x 22 Plastic screw	1	1	355	129354	Protector links Protector left	1	1
289	118938	Bremszughalter, vollst. Brake cable holder, cpl.	1	1	356	129326	Blechmutter B 5,5 Sheet metal nut	7	7
290	106256	Klemmblech Clamp plate	1	1	357	129323	Kühler rechte Radiator right	1	1
291	106255	Klemmblech, vollst. Clamp plate, cpl.	1	1	358	129395	Protector rechts Protector right	1	1
292	101568	Sechskantschraube M6 x 18 DIN 933 Hexagon screw	1	1	359	101498	Blechschraube m. Skt. B 5,5 x 16 Screw	11	11
293	101704	Federling B6 DIN 127 Spring ring	1	1	360	101525	Sechskantschraube M6 x 14 DIN 933 Hexagon screw	2	2
294	106254	Satz Motorhalteerschrauben Set Motor mount bolts	1	1	361	108593	Druckschlauch hinten Tube	1	1
295	119069	Sechskantschraube M8 x 115 DIN 931 Hexagon screw	2	2	362	129388	Druckschlauch oben Tube	1	1
296	101700	Sicherungsmutter M8 DIN 980 Securing nut	2	2	363	129330	Verbindungsschlauch Tube	1	1
297	108544	Keite 5/8" x 1/4" 116 Glieder m. Schloß Chain with lock	1	1	364	129390	Kühlerachlauch oben Tube	2	2
298	100325	Habelbinder Rubber cable clip	1	1	365	129392	Kühlerachlauch unten links Tube	1	1
299	108559	Typschild Identification plate	1	1	366	129391	Kühlerachlauch unten rechts Tube	1	1
300	101900	Halbrundkerbmeßel 2 x 4 DIN 1476 Oval hand nail	2	2	367	129389	Saugschlauch Tube	1	1
302	106760	Habelbinder 3,6 x 277 Rubber cable clip	2	2	368	106130	Schlauchbinder Clamp	14	14
303	101587	Sechskantschraube M8 x 16 DIN 933 Hexagon screw	2	2	369	108662	T-Verbindungsgestöck T5 19 T-piece	1	1
304	118940	Startnummernschild links Side panel left	1	1	370	108663	Y-Verbindungsgestöck Y5 19 Y-piece	1	1
305	118942	Abziehfolie links grün Decal left green	1	-	371	129449	Kühlerdeckel Radiator cover	1	1
	118993	Abziehfolie links gelb Decal left yellow	-	1	372	129401	Hauptbremszylinder vollst. Master brake cylinder complete	1	1
	119433	Abziehfolie links weiß Decal left white	n.B.	n.B.	129541	Hauptbremszylinder vollst. Master brake cylinder complete	n.B.	n.B.	



## IX. CHASSIS AND FRAME PARTS (continued)

Bild Nr.	EDV-Nr.	Bezeichnung Description	Typ 367 GM 250	Typ 368 GM 300
373	129402	Hauptbremszylinder Master brake cylinder	1	1
374	129404	Druckfeder Pressure spring	1	1
377	129544	Kolben vollst. Piston cpl.	1	1
	129545	Kolben vollst. Piston cpl.	n.B.	n.B.
378	129408	Scheibe 10,3 x 19,5 x 1,5 Washer	1	1
379	129409	Sicherungsring 20 x 1 DIN 472 Lock ring	1	1
380	129410	Druckstange Spindle	1	1
381	101667	Sechskantmutter M6 DIN 934 Hexagon nut	1	1
382	129411	Gabelkopf 86 x 12 Fork head	1	1
383	129412	Sicherungsbolzen Link pin	1	1
384	129413	Staubmanschette Dust boot	1	1
385	129414	Stützen Connection tube	1	1
386	129415	O-Ring	1	1
387	101570	Sechskanterschraube M6 x 25 DIN 933 Hexagon screw	2	2
388	101712	Federcheibe BS DIN 137 Spring washer	2	2
389	<del>129499</del> 9419	Fußbremshebel m. Bremtritt genietet Foot brake lever with running plate riveted	1	1
390	129423	Lagerbuchse Bush	1	1
391	129422	Lagerbuchse (klein) Bush	1	1
392	129424	Rückzugfeder Return spring	1	1
393	129425	Distanzbuchse Spacer bush	1	1
394	129426	Innensechskanterschraube M6x35 Screw with inner hexagon	1	1
395	101734	Scheibe 8 8,4 DIN 125 Washer	1	1
396	129428	Bremsflüssigkeitsbehälter vollst. Brake fluid reservoir complete	1	1
397	129429	Behälter Reservoir	1	1
398	129430	Ausgleichmanschette Balance boot	1	1
399	129431	Schraubverschluss Screw cap	1	1
400	100406	Benzinschlauch Hose	1	1
401	101525	Sechskanterschraube M6 x 14 DIN 933 Hexagon screw	2	2
402	101732	Scheibe 86,4 DIN 125 Washer	4	4
403	102890	Scheibe 10,1 x 18,2 x 0,6 Washer	1	1
404	118877	Schmutzabweiser links lang Mud flap left long	1	1
405	118894	Schmutzabweiser rechts kurz Mud flap right short	1	1
406	129329	Schlauchschelle Hose clip	2	2
407	101750	Scheibe 8 6,4 DIN 9021 Washer	4	4
408	101529	Zylinderschraube M5 x 10 DIN 84 Screw	2	2
409	101689	Sicherungsmutter M5 DIN 980 Securing nut	2	2
410	129371	Federdistanz Spacer spring	2	2
411	101690	Sicherungsmutter M6 DIN 980 Securing nut	2	2
412	129329	Schlauchschelle Hose clip	4	4
413	119160	Schwinge Metallpuffer Rubber bloc	4	4
414	101565	Sechskanterschraube M6 x 12 DIN 933 Hexagon screw	4	4
416	129547	Distanzhülse Spacer bush	2	2
420	129295	Zangenträger vollst. vorne Front caliper holder complete	1	1
421	129296	Zangenträger vorn Front caliper holder	1	1
422	129303	Bremszange vollst. vorne Front caliper complete	1	1
423	129297	Bremszange eingepreßt vorne Caliper pressed in	1	1
424	129540	Aufkleber Twin Link Decal Twin Link	2	2
425	10101	SPHERICAL BEARING - OHLINS	1	1
426	9416	BRAKE PEDAL TIP	1	1
<b>Sonderzubehör</b>				
-	119453	Gleitrohrprotectoren-Satz Fork protector	n.B.	n.B.
-	119157	Minnschutz Handlebar protector	n.B.	n.B.
-	119185	Handschutz Hand guard	n.B.	n.B.

**Anmerkung:**

Für die mit \*1\* gekennzeichneten Naben (Vorderradnabe, Hinterradnabe) muß Bremscheibe mit Bild-Nr. 126/1 und Senkschraube mit Bild-Nr. 127/1 verwendet werden.  
Für die mit \*2\* gekennzeichneten Naben muß Bremscheibe mit Bild-Nr. 126/2 und Linsensenkschraube mit Bild-Nr. 127/2 verwendet werden.

**Remark:**

By using \*1\* signed hubs (front wheel hub, rear wheel hub) it's necessary to use brake disc, picture-number 126/1, and screw number 127/1.  
By using \*2\* signed hubs it's necessary to use brake disc, number 126/2, and screw number 127/2.



# IX. CHASSIS AND FRAME PARTS (continued)

Ohne Bildnummern:				EDV-Nr.	Bezeichnung Description	Typ 467 CC 250	Typ 468 CC 500	Typ 468 CC 500 aircool.	
Cross Country-Modelle CC 250, CC 500 und CC 500 aircooled (abweichende Teile von Moto-Cross Modellen)									
EDV-Nr.	Bezeichnung Description	Typ 467 CC 250	Typ 468 CC 500	Typ 468 CC 500 aircool.					
129500	Rahmen, vollst. Frame	1	1	-	119113	Nabenantrieb, vollst. Hub drive compl.	1	1	1
129458	Rahmen, vollst. Frame	-	-	1	107708	Leitflügel, vollst. Leading bow, compl.	1	1	1
1119095	Kotflügel, hinten. Rear fender	1	1	-	129462	Schutzrohr f. Tacho Protection tube	1	1	1
107742	Kabelhalter Clip	2	2	-	129463	Halteblech Holding plate	1	1	1
129460	Bremschlauch Enduro, vorn Brake hose	1	1	1	108746	Ritzelabdeckung Protector for sprocket	1	1	1
119099	Stechachse, vorne GS Stick axle, front GS	1	1	1	108747	Distanzrolle Spacer bush	1	1	1
129454	Zahnkranz z = 54 Sprocket	1	1	1	108024	Kupplungsdeckel Clutch cover	-	-	1
119102	Rückleuchte, vollst. Rear light, cpl.	1	1	-	108284	Murbelselle vollst. Crankshaft compl.	-	-	1
119195	Kabelsatz CC Main cable set	1	1	-	109038	Murbelselle im Austausch Crankshaft in exchange	-	-	n.B.
100325	Kabelbinder Rubber cable clip	11	11	11	104088	Pleuelreparaturset Connection rod repair kit	-	-	n.B.
103102	Glühlampe 12V 21/5W Bulb	1	1	-	129464	Zylinder, vollst. Cylinder, compl.	-	-	1
129477	Ablendschalter CC Spacer lever cpl.	1	1	1	129484	Zylinder, vollst. im Austausch Cylinder, compl. in exchange	-	-	n.B.
108726	Glashalterring montiert Glass ring support assembled	1	1	1	129020	Zylinderbuchse Cylinder bush	-	-	1
129467	Scheinwerferverkleidung Headlight housing	1	1	1	119146	Getriebehauptwelle HE Gear main shaft	1	1	1
119088	Glühlampe 12V 35/35 W Bulb	1	1	1	108622	Zahnrad 2.Gang HM(E) Sprocket 2nd gear on mainshaft	1	1	1
129469	Halteplatte CC Holding plate	1	1	1	108625	Lohrad 2.Gang AH (E) 2nd gear on output shaft	1	1	1
101571	Sechskantschraube M6 x 30 DIN 931 Hexagon screw	1	1	1	119148	Lohrad 1.Gang AH(ME) 1st gear on output shaft	1	1	1
101732	Scheibe B6,4 DIN 125 Washer	2	2	2	108252	Kettenrad 2 = 15 Sprocket	1	1	1
119090	Spannungsregler Voltage regulator	1	1	1	119125	Zündanlage vollst. Ignition system compl.	1	1	1
108680	Tank Tank only	-	-	1	101529	Zylinderschraube M5 x 10 DIN 84 Cylinder screw	3	3	3
129527	Tankdekor links Tank decal left	-	-	1	101711	Federscheibe B5 DIN 137 Spring washer	3	3	3
129528	Tankdekor rechts Tank decal right	-	-	1	100600	Wasserschutzkappe water protection cap	1	1	1
108603	Gummitülle Rubber bush	-	-	2	101126	Kerzenstecker abgedichtet Spark plug	1	1	1
101572	Sechskantschraube M6 x 35 DIN 931 Hexagon screw	-	-	2	129529	Protector links Protector left	1	1	-
101750	Scheibe B6,4 DIN 9021 Washer	-	-	2	129530	Protector rechts Protector right	1	1	-
118919	Distanzrohr Spacer bush	-	-	2					
129459	Tank Tank only	1	1	-					
129513	Protectordekor M-Star Protector decal M-Star	2	2	-					
129512	Dekor rechts *250° Decal right *250°	1	-	-					
129524	Dekor links *250° Decal left *250°	1	-	-					
129526	Dekor rechts *500° Decal right *500°	-	1	-					
129525	Dekor links *500° Decal left *500°	-	1	-					
129482	Aufkleber *Made in Germany* Decal	1	1	1					
119120	Sitzbank *M-Star*, nieder Seat, cpl., low	1	1	1					
119202	Bezug, nieder, M-Star Seat cover low	1	1	1					
119121	Sitzbank *M-Star*, hoch Seat, cpl., high	n.B.	n.B.	n.B.					
119203	Bezug, hoch, M-Star Seat cover high	n.B.	n.B.	n.B.					
129456	Kette 5/8 x 1/4 ; 118 Glieder Chain	1	1	1					
129553	Auspuff, geschw. Exhaust system	-	-	1					
119204	Seitenstütze, vollst. Side stand, cpl.	1	1	1					
119205	Seitenstützenhalterung Side stand holder	1	1	1					
119206	Seitenstützrohr Side stand, only	1	1	1					
119207	Anschlaggummi Rubber	1	1	1					
119208	Feder Spring	1	1	1					
101593	Sechskantschraube M6 x 35 DIN 931 Hexagon screw	1	1	1					
101692	Sicherungsmutter M8 DIN 980 Securing nut	1	1	1					
119293	Buchse Bush	1	1	1					
101579	Sechskantschraube M6 x 80 DIN 931 Hexagon screw	2	2	2					
101690	Sicherungsmutter M6 DIN 980 Securing nut	2	2	2					
101732	Scheibe B6,4 DIN 125 Washer	2	2	2					
119193	Tachometer, vollst. Speedometer	1	1	1					
119194	Tachowelle Speedometer spindle	1	1	1					



## IX. CHASSIS AND FRAME PARTS (continued)

ECV-Nr.	Bezeichnung Description	Typ 267	Typ 268	Typ 268
		GME 290	GME 500	GME 500 aircool.
101592	Sechskantschraube M8 x 30 DIN 933 Hexagon screw	2	2	2
101734	Scheibe B 8,4 DIN 125 Washer	2	2	2
101700	Sicherungsmutter M8 DIN 980 Securing nut	2	2	2
108746	Ritzelabdeckung Protector for sprocket	1	1	1
108747	Distanzrolle Spacer bush	1	1	1
108024	Kupplungsdeckel Clutch cover	-	-	1
108284	Kurbelwelle vollst. Crankshaft complete	-	-	1
109038	Kurbelwelle im Austausch Crankshaft in exchange	-	-	n.B.
104088	Pleuelreparaturatz Connecting rod repair kit	-	-	n.B.
129464	Zylinder, vollst. Cylinder, complete	-	-	1
129484	Zylinder, vollst. im Austausch Cylinder, compl. in exchange	-	-	n.B.
129020	Zylinderbuchse Cylinder bush	-	-	1
119146	Getriebehauptwelle HE Gear main shaft	1	1	1
108622	Zahnrad 2.Gang HM(E) Sprocket 2nd gear on mainshaft	1	1	1
108625	Lohrad 2. Gang HM (E) 2nd gear on output shaft	1	1	1
119148	Lohrad 1.Gang HM(HE) 1st gear on output shaft	1	1	1
108253	Kettenrad z = 16 Sprocket	1	1	1
119125	Zündenlage vollst. Ignition system complete	1	1	1
101529	Zylinderachse M8 x 10 DIN 84 Cylinder screw	3	3	3
101711	Federachse B5 DIN 137 Spring washer	3	3	3
100600	Wasserschutzkappe Water protection cap	1	1	1
101126	Kerzenstecker abgeschirmt Spark plug	1	1	1



# X. PARTS LIST: ENDURO

Ohne Bildnummern:

Enduro-Modelle GME-Star 250, GME-Star 500 und GME-Star 500 aircooled

(abweichende Teile von Moto-Cross Modellen)

EDV-Nr.	Bezeichnung Description	Typ 267 GME 250	Typ 268 GME 500	Typ 268 GME 500 aircool.	EDV-Nr.	Bezeichnung Description	Typ 267 GME 250	Typ 268 GME 500	Typ 268 GME 500 aircool.
					129502	Ablendschalter vollst. Spacer lever complete	1	1	1
					129503	Hauptkabelsatz Main cable set	1	1	1
					108727	Blinkleuchte Blinking light	4	4	4
					108728	Gummihalter Rubber holder	4	4	4
129471	Rahmen Frame	1	1	-	108729	Kugellampe Ball bulb	4	4	4
129550	Rahmen Frame	-	-	1	108730	Massekabel Cable	4	4	4
129472	Hinterradschwinge Rear wheel swing arm	1	1	1	105639	Distanzring Spacer ring	2	2	2
119093	Kettenschutz Chain protector	1	1	1	101735	Scheibe B 10,5 DIN 125 Washer	4	4	4
107831	Halter für Kettenschutz Holder	1	1	1	101676	Sechskantschraube flach M10 DIN 936 Hexagon nut flat	4	4	4
101878	Senkschraube m. Kreuzschlitz M6x16 D.965 3 Sunk screw	3	3	3	101512	Federring B10 DIN 128 Spring ring	4	4	4
101750	Scheibe B 6,4 DIN 9021 Washer	3	3	3	108731	Blinkerhalter links Blinkerholder left	1	1	1
101691	Sicherungsmutter M6 DIN 980 Securing nut	3	3	3	108732	Blinkerhalter rechts Blinkerholder right	1	1	1
119094	Kotflügel, hinten, vollst. Rear fender, complete	1	1	1	108733	Distanzstück für Blinkerhalter Piece for blinker holder	2	2	2
119095	Kotflügel, hinten Rear fender, only	1	1	1	101659	Innensechskantschraube M10 x 50 DIN912 Hexagon screw	2	2	2
119096	Kotflügelverlängerung Extension for rear fender	1	1	1	108734	Zündschloß Ignition lock	1	1	1
118944	Linse Schraube M6 x 4 DIN 98450 Screw	2	2	2	108735	Gummikappe Rubber cap	1	1	1
107742	Kabelhalter, rot Clip, red	2	2	2	108736	Zündschloßkappe Cap for ignition lock	1	1	1
101568	Sechskantschraube M6 x 18 DIN 933 Hexagon screw	1	1	1	108737	Blink- und Laderregelung Blink regulation	1	1	1
102708	Gummischeibe Rubber washer	1	1	1	119109	Luftfilterkasten GS Filter case cover	1	1	1
101732	Scheibe B 6,4 DIN 125 Washer	3	3	3	107314	Schaumstoff Seat foam	2	2	2
101750	Scheibe B 6,4 DIN 9021 Washer	7	7	7	119110	Filterkastendeckel, vollst. Filter case cover, compl.	1	1	1
105029	Distanzscheibe für Seitendeckel Spacer ring	4	4	4	106744	Kette 114 Glieder Chain 114 links	1	1	1
101570	Sechskantschraube M6 x 25 DIN 933 Hexagon screw	4	4	4	119140	Aufkleber f. Protektor links Decal for protector lefthand	1	1	-
107895	Schutzblech vorne Front fender	-	-	1	119141	Aufkleber f. Protektor rechts Decal for protector righthand	1	1	-
103047	Rückspiegel Back mirror	1	1	1	106759	Gummiband Rubber ribbon	1	1	1
129460	Bremsschlauch Enduro, vorn Brake hose	1	1	1	107777	Lenkchloß Steering lock	1	1	1
119099	Steckachse, vorne GS Stick axle, front GS	1	1	1	101601	Sechskantschraube M8 x 70 DIN 931 Hexagon screw	-	1	1
129548	Zahnkranz z = 48 Sprocket	-	1	1	119080	Auspuffanlage, geschweißt Exhaust system, welded	1	-	-
108533	Tank vollst. Tank complete	-	-	1	119292	Auspuffanlage, geschweißt, Wettbewerb Exhaust system, welded, competition	1	-	-
108526	Tank Tank	-	-	1	101875	Sicherungerring 88 x 3 DIN 472 Securing ring	1	1	1
108527	Tankdekor links Tank decal left	-	-	1	101897	Sicherungerring 32 x 1,5 DIN 471 Securing ring	1	1	1
108528	Tankdekor rechts Tank decal right	-	-	1	119154	Schalldämpfer geschweißt Muffler, welded	1	1	1
108603	Gummitülle Rubber bush	-	-	2	119155	Siebrohr geschweißt Tube welded	1	1	1
101570	Sechskantschraube M6 x 25 DIN 933 Hexagon screw	-	-	2	107664	Eingangsblende Plate	1	1	1
101750	Scheibe B6,4 DIN 9021 Washer	-	-	2	107665	Dämpfpatrone Damper cartridge	1	1	1
108604	Distanzrohr Spacer bush	-	-	2	107666	Verschlußblende End plate	1	1	1
100805	Glühlampe 6V 35/35W DIN 72601 Bulb	1	1	1	107667	Abschlußplatte Cover plate	1	1	1
129468	Halteplatte GS Holding plate GS	1	1	1	129517	Auspuffanlage, geschweißt Exhaust system, welded	-	1	-
105070	Bremslichtschalter vollst. Switch for brake light complete	1	1	1	129522	Auspuffanlage, geschweißt, Wettbewerb Exhaust system, welded, competition	-	1	-
105640	Gummikappe Rubber cap	1	1	1	129566	Auspuffanlage, geschweißt Exhaust system, welded	-	-	1
108738	Gleichstromhorn Direct current horn	1	1	1	129568	Auspuffanlage, geschweißt, Wettbewerb Exhaust system, welded, competition	-	-	1
100325	Kabelbinder Cable binder	15	15	15	119058	Tacho vollst. Speedometer complete	1	1	1
103891	Zwischenrolle Roller	1	-	1	119056	Tachowelle Speedometer spindle	1	1	1
119149	Hornhalter Horn holder	1	1	1	103263	Dämpfungshalterung vollst. Damper holder complete	1	1	1
129467	Scheinwerferverkleidung Headlight housing	1	1	1	101649	Innensechskantschraube M8 x 45 DIN 912 Hexagon screw	4	4	4
108742	Zylinderbl.-Schraube B4,2 x 32 Cylinder screw	1	1	1	119114	Schutzkappe Protector cap	1	1	1
108743	Blechmutter Tin nut	1	1	1	101735	Scheibe B 10,5 DIN 125 Washer	1	1	1
108744	Feder Spring	1	1	1	119134	Scheibe 10,5 Washer	1	1	1
106547	Linse bl.-Schraube m. Kreuzschlitz Screw	1	1	1	107708	Leitbügel vollst. Leading bow complete	1	1	1
107756	Gummiesche Rubber	4	4	4	119116	Nabenantrieb bearbeitet Hub drive complete worked out	1	1	1
100683	Schlauchklemme Hose clamp	2	2	2	119117	Zwischenstück für Nabenantrieb Spacer for hub drive	1	1	1
108726	Glashalterung montiert Glass ring support assembled	1	1	1	119113	Nabenantrieb vollst. Hub drive complete	1	1	1
105634	Glühlampe 6V 21/5W Bulb	1	1	1	124470	Mittelständer geschweißt Middle mount welded	1	1	1
107389	Lichtaustritt hinten Light exit, rear	1	1	1	106179	Ulenkhaken vollst. Turn back hook, complete	1	1	1
107390	Lampenträger hinten Light holder, rear	1	1	1	100388	Gummling Rubber ring	2	2	2
119103	Rücklichtgehäuse Rear light housing	1	1	1	108762	Rolle Roller	2	2	2
					101638	Sicherungsscheibe Securing washer	3	3	3
					100386	Ständerfeder Spring mount	2	2	2
					128763	Distanzrohr für Mittelständer Spacer tube for middle mount	2	2	2

## X. PARTS LIST: ENDURO (continued)

ECV-Nr.	Bezeichnung Description	Typ 267	Typ 268	Typ 268
		GME 250	GME 500	GME 500 aircool.
101592	Sechskantschraube M8 x 20 DIN 933 Hexagon screw	2	2	2
101734	Scheibe B 8,4 DIN 125 Washer	2	2	2
101700	Sicherungsmutter M8 DIN 980 Securing nut	2	2	2
108746	Ritzelabdeckung Protector for sprocket	1	1	1
108747	Distanzrinne Spacer bush	1	1	1
108024	Kupplungsdeckel Clutch cover	-	-	1
108284	Kurbelwelle vollst. Crankshaft complete	-	-	1
109038	Kurbelwelle im Austausch Crankshaft in exchange	-	-	n.B.
104088	Pleuelreparaturset Connecting rod repair kit	-	-	n.B.
129464	Zylinder, vollst. Cylinder, complete	-	-	1
129484	Zylinder, vollst. im Austausch Cylinder, compl. in exchange	-	-	n.B.
129020	Zylinderbuchse Cylinder bush	-	-	1
119146	Getriebehauptwelle HE Gear main shaft	1	1	1
108622	Zahnrad 2.Gang HU(E) Sprocket 2nd gear on mainshaft	1	1	1
108625	Losrad 2. Gang AU (E) 2nd gear on output shaft	1	1	1
119148	Losrad 1.Gang AU(HE) 1st gear on output shaft	1	1	1
108253	Kettenrad z = 16 Sprocket	1	1	1
119125	Zündenlage vollst. Ignition system complete	1	1	1
101529	Zylinderschraube M5 x 10 DIN 84 Cylinder screw	3	3	3
101711	Federscheibe B5 DIN 137 Spring washer	3	3	3
100600	Wasserschutzkappe Water protection cap	1	1	1
101126	Kerzenstecker abgeschirmt Spark plug	1	1	1



# X. PARTS LIST: CROSS COUNTRY:

Ohne Bildnummern:

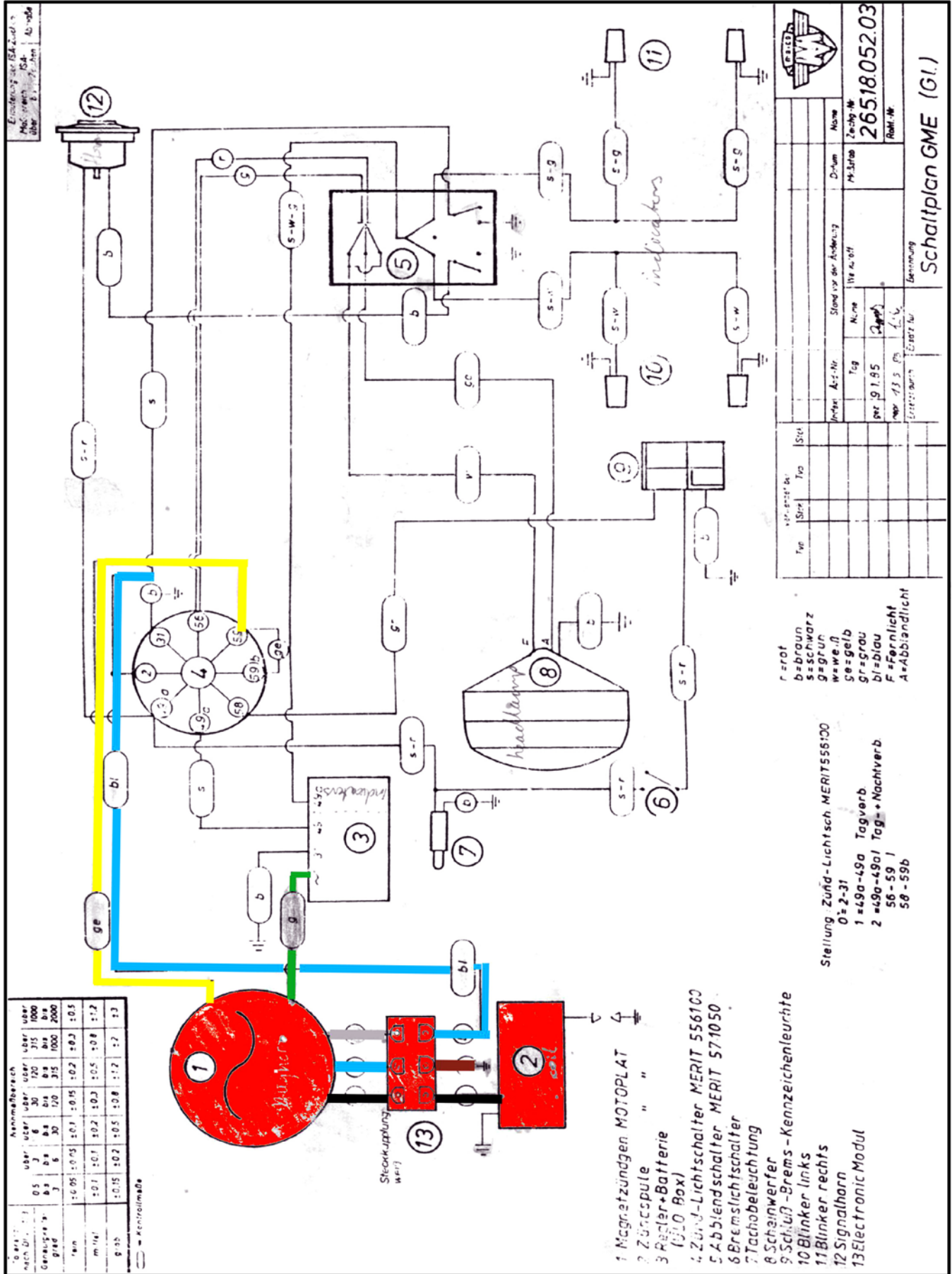
Cross Country-Modelle CC 250, CC 500 und CC 500 aircooled  
(abweichende Teile von Moto-Cross Modellen)

EDV-Nr.	Bezeichnung Description	Typ 467 CC 250	Typ 468 CC 500	Typ 468 CC 500 aircool.
129500	Rahmen, vollst. Frame	1	1	-
129458	Rahmen, vollst. Frame	-	-	1
1119095	Kotflügel, hinten Rear fender	1	1	-
107742	Kabelhalter Clip	2	2	-
129460	Bremsschlauch Enduro, vorn Brake hose	1	1	1
119099	Stechachse, vorne GS Stick axle, front GS	1	1	1
129454	Zahnkranz z = 54 Sprocket	1	1	1
119102	Rückleuchte, vollst. Rear light, cpl.	1	1	-
119195	Kabelsatz CC Main cable set	1	1	-
100325	Kabelbinder Rubber cable clip	11	11	11
103102	Glühlampe 12V 21/5W Bulb	1	1	-
129477	Abblendschalter CC Spacer lever cpl.	1	1	1
108726	Glashaltering montiert Glass ring support assembled	1	1	1
129467	Scheinwerferverkleidung Headlight housing	1	1	1
119088	Glühlampe 12V 35/35 W Bulb	1	1	1
129469	Halteplatte CC Holding plate	1	1	1
101571	Sechskantschraube M6 x 30 DIN 931 Hexagon screw	1	1	1
101732	Scheibe B6,4 DIN 125 Washer	2	2	2
119190	Spannungsregler Voltage regulator	1	1	1
108680	Tank Tank only	-	-	1
129527	Tankdekor links Tank decal left	-	-	1
129528	Tankdekor rechts Tank decal right	-	-	1
108603	Gewindestülpe Rubber bush	-	-	2
101572	Sechskantschraube M6 x 35 DIN 933 Hexagon screw	-	-	2
101750	Scheibe B6,4 DIN 9021 Washer	-	-	2
119191	Distanzrohr Spacer bush	-	-	2
129459	Tank Tank only	1	1	-
129513	Protectordekor M-Star Protector decal M-Star	2	2	-
129512	Dekor rechts "250" Decal right "250"	1	-	-
129524	Dekor links "250" Decal left "250"	1	-	-
129526	Dekor rechts "500" Decal right "500"	-	1	-
129525	Dekor links "500" Decal left "500"	-	1	-
129482	Aufkleber "Made in Germany" Decal	1	1	1
119120	Sitzbank "M-Star", nieder Seat, cpl., low	1	1	1
119202	Bezug, nieder, M-Star Seat cover low	1	1	1
119121	Sitzbank "M-Star", hoch Seat, cpl., high	n.B.	n.B.	n.B.
119203	Bezug, hoch, M-Star Seat cover high	n.B.	n.B.	n.B.
129456	Kette 5/8 x 1/4 : 118 Glieder Chain	1	1	1
129553	Auspuff, geschw. Exhaust system	-	-	1
119204	Seitenstütze, vollst. Side stand, cpl.	1	1	1
119205	Seitenstützenhalterung Side stand holder	1	1	1
119206	Seitenstützrohr Side stand, only	1	1	1
119207	Anschlaggummi Rubber	1	1	1
119208	Feder Spring	1	1	1
101593	Sechskantschraube M6 x 35 DIN 931 Hexagon screw	1	1	1
101692	Sicherungsmutter M8 DIN 980 Securing nut	1	1	1
119293	Buchse Bush	1	1	1
101579	Sechskantschraube M6 x 80 DIN 931 Hexagon screw	2	2	2
101690	Sicherungsmutter M6 DIN 980 Securing nut	2	2	2
101732	Scheibe B6,4 DIN 125 Washer	2	2	2
119193	Tachometer, vollst. Speedometer	1	1	1
119194	Tachowelle Speedometer spindle	1	1	1

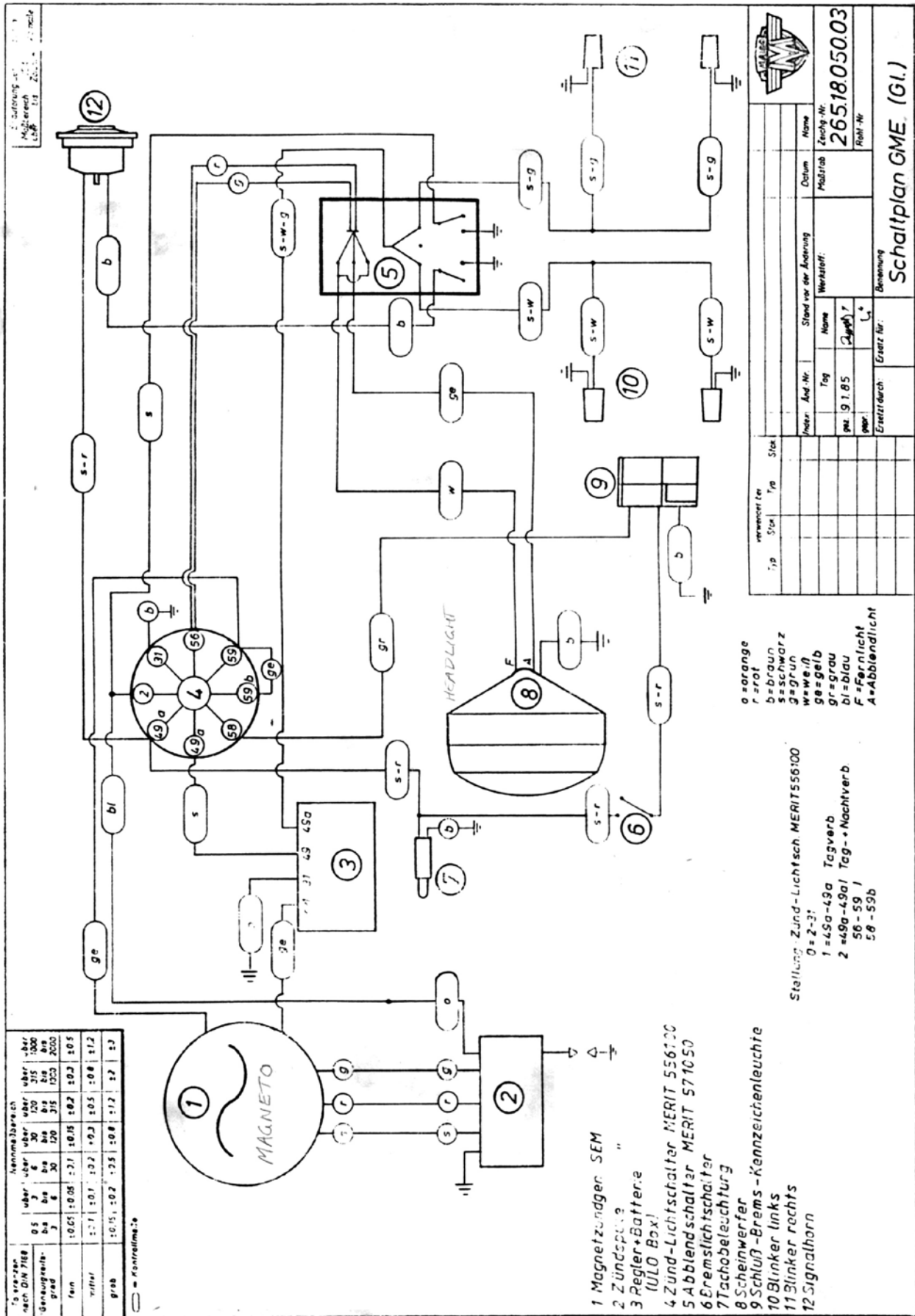
EDV-Nr.	Bezeichnung Description	Typ 467 CC 250	Typ 468 CC 500	Typ 468 CC 500 aircool.
119113	Nabenantrieb, vollst. Hub drive compl.	1	1	1
107708	Leitbügel, vollst. Leading bow, compl.	1	1	1
129462	Schutzrohr f. Tacho Protection tube	1	1	1
129463	Halteblech Holding plate	1	1	1
108746	Ritzelabdeckung Protector for sprocket	1	1	1
108747	Distanzrolle Spacer bush	1	1	1
108024	Kupplungsdeckel Clutch cover	-	-	1
108284	Kurbelwelle vollst. Crankshaft compl.	-	-	1
109038	Kurbelwelle im Austausch Crankshaft in exchange	-	-	n.B.
104088	Pleuelreparatursatz Connection rod repair kit	-	-	n.B.
129464	Zylinder, vollst. Cylinder, compl.	-	-	1
129484	Zylinder, vollst. im Austausch Cylinder, compl. in exchange	-	-	n.B.
129020	Zylinderbuchse Cylinder bush	-	-	1
119146	Getriebehauptwelle ME Gear main shaft	1	1	1
108622	Zahnrad 2.Gang HW(E) Sprocket 2nd gear on mainshaft	1	1	1
108625	Losrad 2.Gang AU (E) 2nd gear on output shaft	1	1	1
119148	Losrad 1.Gang AU(ME) 1st gear on output shaft	1	1	1
108252	Kettenrad z = 15 Sprocket	1	1	1
119125	Zündanlage vollst. Ignition system compl.	1	1	1
101529	Zylinderschraube M5 x 10 DIN 84 Cylinder screw	3	3	3
101711	Federscheibe B5 DIN 137 Spring washer	3	3	3
100600	Wasserschutzkappe Water protection cap	1	1	1
101126	Kerzenstecker abgeschirmt Spark plug	1	1	1
129529	Protector links Protector left	1	1	-
129530	Protector rechts Protector right	1	1	-



# XI. WIRING DIAGRAM - MOTOPLAT



# XI. WIRING DIAGRAM - SEM



Name		Datum		Zug-Nr.	
Mitarbeiter		Mitarbeiter		265.18050.03	
Erstellt durch		Erstellt durch		Rohr-Nr.	
Benennung		Benennung		Schaltplan GME (GI.)	

Handwritten entries:  
Name: [unclear]  
Datum: [unclear]  
Zug-Nr.: 265.18050.03  
Mitarbeiter: [unclear]  
Erstellt durch: [unclear]  
Benennung: Schaltplan GME (GI.)

Stellung: Zünd-Lichtsch. MERIT556100  
0 = 2-3:  
1 = 65a-49a Tagverb  
2 = 49a-49a1 Tag-+Nachtverb  
58-59 1  
58-59b